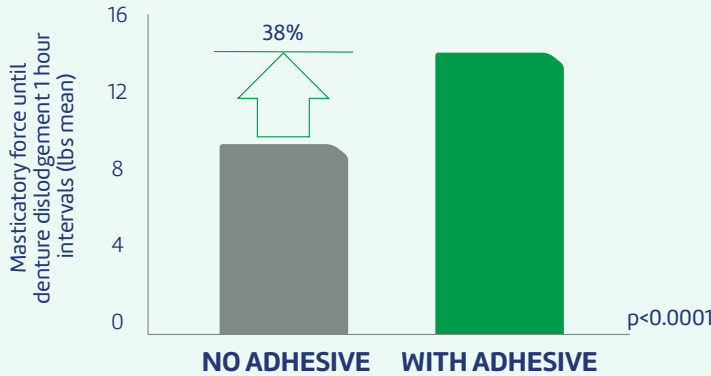


# DENTURE ADHESIVES MAKE A DIFFERENCE FOR PATIENTS WITH DENTURES



**DENTURE MOVEMENT IS ONE OF THE MOST COMMON CONCERNS FOR PATIENTS<sup>1</sup>**



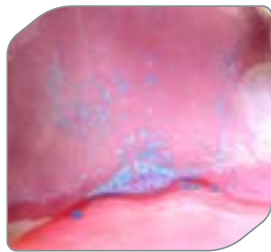
**Poligrip provides 38% increase in bite force<sup>\*†3</sup>**

This clinical study measured 'bite force' – the tipping force required to dislodge the upper denture. Readings were taken 1 hour after the application of adhesive. The graph shows the mean maximum force exerted before the denture dislodged. Denture adhesives **significantly improve retention and stability of well-fitting dentures** in this study.<sup>3</sup>

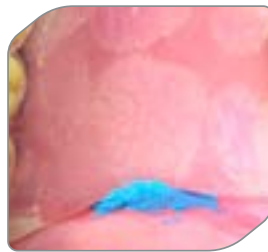
\*vs. no adhesive after one hour. †in clinical studies



**86% OF DENTURE PATIENTS EXPERIENCED FOOD TRAPPED UNDER DENTURES<sup>2</sup>**



No adhesive

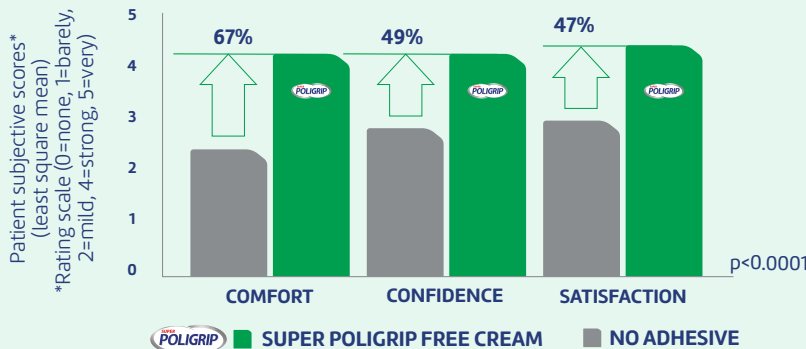


With Poligrip adhesive

**Poligrip seals out 74% of food particles<sup>\*\*</sup>**

Poligrip forms a seal to help keep food particles from getting stuck between the dentures and the gum as shown in the image.

\*\*vs no adhesive after one hour on a lower full denture



**Poligrip provides an increase in patient comfort, confidence and satisfaction<sup>\*3</sup>**

This clinical study measured patient rating scores of **comfort, confidence and satisfaction** with dentures while eating peanuts. All three scores were **rated significantly higher** when using adhesive.

\*vs no adhesive

1. Haleon Data on File, Radius Global Market Research 2015. 2. Haleon Data on File, The Chapman Group 2004. 3. Munoz CA et al. 2012. J Prosthodont; 21: 123-129.

Trade marks are owned by or licensed to the Haleon group of companies. PM-US-POLD-23-00062